

Is this email not displaying correctly? [View this email in your browser](#)



May 2023

SHADAC Announcements

Minnesota Community & Uninsured Profile Update - NEW Social Vulnerability Index

Updated data from the 2017-2021 American Community Survey can now be found in Minnesota's [Community and Uninsured Profile](#), which also features a new Social Vulnerability Index overlay that helps identify areas in need of social & economic investment. This profile is an invaluable tool for navigators, grant writers, advocates, and other stakeholders embarking on equity-focused work. Estimates are available at state, county, ZIP, code and state legislative district levels. [Learn more.](#)

Year in Review: SHADAC Annual Report

Throughout 2022, SHADAC continued to utilize current health data and mixed-method approaches to provide data analytics and technical assistance to inform health policy discussions. We highlight some of this recent work and key priority areas in our 2022 Annual Report. [Take a look.](#)



Monitoring Broadband Expansion and Disparities

SHADAC analysis of 2021 American Community Survey data shows that households' access to broadband internet has increased by 3.8 percentage points since 2019, rising to 90.1%. With states utilizing available federal and state grant funding to bolster broadband infrastructure and affordability, access to needed telehealth services increased as well. This [new blog](#) uses data from [State Health Compare](#) to explore promising broadband expansion initiatives and opportunities across the states. [Read more.](#)

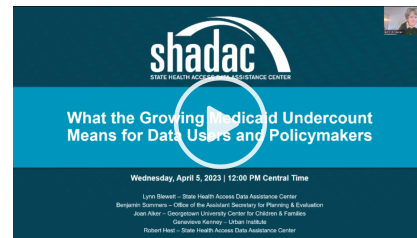
Federal Poverty Guidelines vs. Federal Poverty Level

This annually updated SHADAC resource outlines key differences between Federal Poverty Level (used to estimate the number of Americans in poverty each year) and the Federal Poverty Guidelines (used to determine financial eligibility for public programs). This year's thresholds and use cases for each metric are now available [on our blog](#).

Medicaid Undercount Webinar: Recording and Additional Q&As Now Available

Thank you to all those who attended our April webinar on concerns with the rising Medicaid undercount, featuring SHADAC's Robert Hest, Dr. Benjamin Sommers of ASPE, Genevieve Kenney of Urban Institute, and Joan Alker of Georgetown University's Center for Children and Families.

Missed the event? Watch the recording and access presentation materials on our website.



Data, Analysis, and Trends from the States

Delaware: New Data on Health Care Quality and Spending

In order to assess progress related to issues such as opioid use, emergency department utilization, and other measures of health, Delaware published a [Benchmark Trend Report](#) that uses data from 2019-2021 to observe trends over time.

Additional Data News and Resources

Tracking the Unwinding with State Health & Value Strategies

Mitigating the impacts of the end of the public health emergency remains a critical focus for many states. State Health & Value Strategies recently published a series of updates related to the Medicaid unwinding as a way to gauge state progress. [Read more.](#)

Further Your Skills at the UMN Public Health Institute

The first session of the University of Minnesota Public Health Institute (PHI) is fast approaching. The PHI provides an opportunity for both students and working professionals to engage in topic areas such as: Policy Development and Program Planning; Communications and Cultural Competence; Analysis and Assessment; and Systems Thinking Skills and Leadership. [Learn more.](#)



Find us over on LinkedIn where we're catching up with SHADAC Research Assistant alumni – including Amelia Harju! Read highlights from our conversation with Amelia and be sure to follow SHADAC on LinkedIn for more updates like these.

Recommendations for our Readers

[Medicaid Enrollees Who are Employed: Implications for Unwinding the Medicaid Continuous Enrollment Provision](#)

Aiden Lee, Joel Ruhter, Christie Peters, Nancy De Lew, Benjamin D. Sommers; ASPE

[The Basic Health Program: Considerations for States and Lessons from New York and Minnesota](#)

Sabrina Corlette, Jason Levitis, Erik Wengle, Rachel Swindle; Urban Institute

[Medicaid Stability Is Critical To Nation's Continuum Of Health Insurance Options](#)

Kate McEvoy; Health Affairs





Forward

[unsubscribe from this list](#) | [update subscription preferences](#)

Copyright © 2023 University of Minnesota
State Health Access Data Assistance Center (SHADAC)
2221 University Avenue SE, Suite 345, Minneapolis, MN 55414